

Continental 
The Future in Motion



We move the earth

Continental Earthmover Tires








Continental's Tire Portfolio for the Earthmoving Industry

Continental is a global player in tire manufacturing. We design, develop, and produce a wide range of superior products for almost every form of mobility. From high-performance bicycles, to high-horsepower specialty mining equipment, we have a solution for almost every need.

Continental is much more than "pure tires" - a major part of our business is dedicated to brake systems, instrumentation, vehicle electronics, and infotainment solutions, as well as systems and components for power trains and chassis, tires, and technical elastomers. Continental enhances driving safety and efficiency. In short, we see ourselves as the experts for driving performance.

This customer-focused approach is the driver behind Continental's production of cross-ply, radial, and solid tires. This enables us to offer tires that exactly match the needs and demands of our customers.

Continental's new Earthmoving tire range is specifically designed for application in the very harsh conditions of surface and underground mining as well as quarries and construction sites. Continental EM-Tires are made to meet the highest level of performance, safety, and durability for every application, even in the harshest of conditions. We're sure that you will find the perfect tire to meet your individual needs within this brochure.

ContiEarth	RDT-Master <i>Radial Tire</i>	EM-Master E3/L3 EM-Master E4/L4 <i>Radial Tire</i>		EM-Master E3/L3 EM-Master E4/L4 LD-Master Traction <i>Radial Tire</i>
				

ContiMine		DumperMaster <i>Radial Tire</i>	DumperMaster DumperMaster LC <i>Radial Tire</i>	DumperMaster <i>Radial Tire</i>
				



CompactMaster EM

CompactMaster AG

MPT81

MPT80

70E

Radial Tire



TeleMaster

Solid Tire

CompactMaster EM

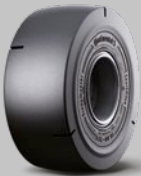
CompactMaster AG

70E

Radial Tire



ScoopMaster



DrillMaster



Underground Loader (Scoop)

Compact Loader & Backhoe Loader

Telehandler

Drill Rig & Bolter



ContiEarth RDT-Master

Rigid dump trucks are built to haul continuously heavy loads over longer distances. In these severe applications tires have to offer high stability and good traction even at higher speeds. In addition, the tires need to be extremely resistant to cut and tear. The RDT-Master is the perfect fit for transporting extra-heavy loads in adverse conditions. The special tread design with a deep tread depth and a wide and flat tread radius offers a high load capacity, excellent wear picture and good self-cleaning characteristics. The angled edges and the open shoulder design allow high lateral stability leading to better manoeuvrability and control when cornering.



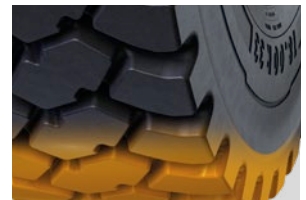
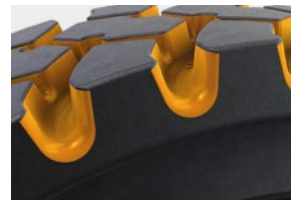
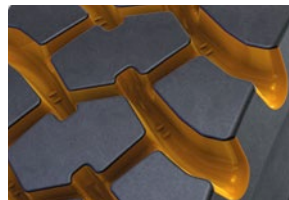
RDT-Master

Dimension	Compound	TRA	Type
18.00R33	ST	E4	TL
	CR	E4	TL
21.00R33	ST	E4	TL
	CR	E4	TL
24.00R35	ST	E4	TL
	CR	E4	TL

ST Standard Compound
CR Cut Resistant Compound



Features and benefits



High carcass protection against cuts and damage by foreign objects due to deep tread

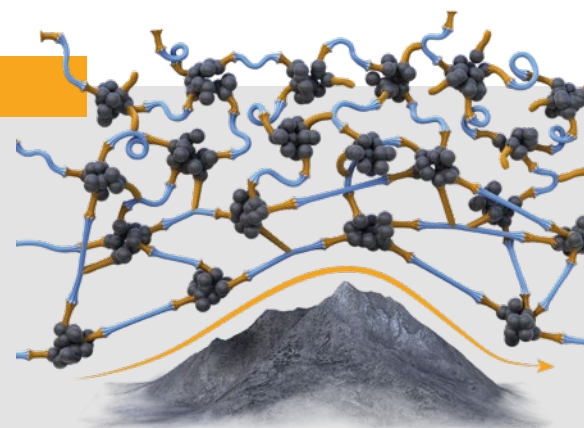
Open shoulder design leads to perfect self-cleaning and enhanced traction

Wide tread with flat radius for maximum traction

Cut Resistant Compound

Polymer meshing system flexes over rough surface and obstacles keeping its structure after pressure release.

Extraordinary resistance to surface stress.





ContiEarth EM-Master

ADTs, loaders, and dozers are used for transporting large quantities of bulk or aggregate material in extreme conditions ranging from soft and muddy soil to gravelly and rocky terrain in construction or mining sites. Durability, excellent traction, and superior resistance to rock cutting and heat generation are essential to operate under extreme offroad conditions.

Continental's EM-Master is optimized for these specific demands. The tire is available in two versions with different tire tread designs. The EM-Master E3/L3 features a normal tread depth and wide spacing between the blocks. This results in excellent self-cleaning characteristics, good traction, and manoeuvrability even on sand or muddy terrain. The Conti EM-Master E4/L4 provides a smaller spacing between the blocks offering smooth running on hard surfaces. The deep tread depth results in a high protection against cuts and object penetrations.



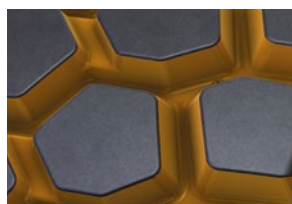
EM-Master E3/L3

Dimension	TRA	Type	Dimension	TRA	Type
17.5R25	E3/L3	TL	29.5R25	E3/L3	TL
20.5R25	E3/L3	TL	750/65R25	E3/L3	TL
23.5R25	E3/L3	TL	775/65R29	E3/L3	TL
26.5R25	E3/L3	TL	875/65R29	E3/L3	TL

■ Available shortly.



Features and benefits



Tread blocks with multiple gripping edges for powerful traction on soft and muddy terrain



Wide space between blocks for outstanding self-cleaning abilities & low heat build-up



Connection between center blocks for improvement of traction capabilities & for smooth running



EM-Master E4/L4

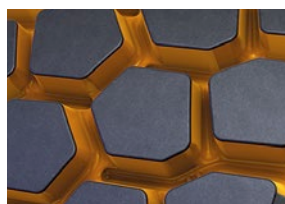
Dimension	TRA	Type
23.5R25	E4/L4	TL
26.5R25	E4/L4	TL
29.5R25	E4/L4	TL



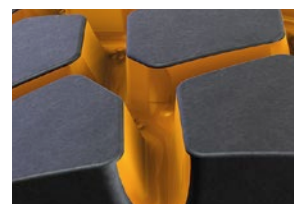
Features and benefits



Tread blocks with multiple gripping edges result in powerful traction on gravelly and rocky terrain



Wider blocks and therefore less void than E3/L3 version for more carcass protection and smoother running



More wear volume than E3/L3 version due to deep tread design



ContiEarth LD-Master Traction

The New LD-Master L5 class is engineered for heavy loaders operating under most demanding conditions in construction or mining applications. Its strong carcass and extra deep tread pattern assure excellent protection and thus continuous vehicle uptime when the going gets rough. "Stay productive and in control!" - The LD-Master comes with highest 3 star load carrying capacity, ContiSensorConnect and an ultra cut resistant tread compound to master every load challenge.

NEW!

sensor
CONNECT

LD-Master Traction

Dimension	TRA	Type
26.5R25	L5	TL
29.5R25	L5	TL
35/65R33	L5	TL

■ Available shortly.



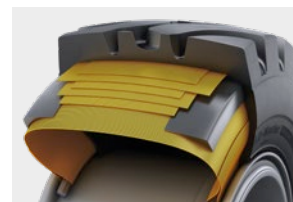
Features and benefits



Extra deep tread and side-wall protection for assured productivity.



Bidirectional, massive tread block design for always assured traction.



Reinforced 3* carcass. The extra reserve for highest load requirements.



ContiMine DumperMaster

Engineered for ADTs (Articulated Dump Trucks) or heavy loaders operating under harshest conditions in construction or mining applications. High load carrying capacity as well as the robustness of the tread and carcass are key criteria for the right tire choice. Continental's DumperMaster is customized for these specific demands and comes with a four star carcass design and ultra cut resistant tread compound to master the application.



DumperMaster

Dimension	Compound	TRA	Type
26.5R25	CR	E4/L4	TL
29.5R25	CR	E4/L4	TL
35/65R33	CR	E4/L4	TL
	LC	E4/L4	TL



- CR** Cut resistant compound
- LC** Long Cycle. Specialized for ADT operations haulage of up to 14 km distance per hour.

Features and benefits



Tread design for carcass protection and long service life



Robust sidewall for better carcass protection against impacts & cuts



Carcass construction for maximum load capacity (based on inflation pressures up to 8 bar/116psi)

Open shoulder design for good self cleaning abilities & traction

Underground ADT Haulage



DumperMaster*

DumperMaster LongCycle

+40%

* approx. 10 km distance per hour for ADT hauling operations

Driven by Data



Intelligent Earthmoving Benefits of digital tire monitoring

When transporting heavy loads on rough terrain, the tires of the vehicles are permanently under pressure, day in and day out. Driving with underinflated or overheated tires will lead to an increased fuel consumption and can cause premature tire failures - a serious concern for the vehicle safety in your daily operations. As a mandatory consequence the inflation pressure and temperature should be monitored constantly. All Continental radial earthmoving tires are therefore equipped with our premounted sensors. These sensors transmit data in real time to our stand alone or complete fleet monitoring solutions of your choice. Time consuming, manual tire checks become redundant.



Why Digital Tire Monitoring?

One Example: Savings for a fleet of 15 vehicles.



1%

increase in fuel efficiency¹



15 Min

saving for vehicle inspection (195 hours/year)²



15%

longer tread life¹

¹ vs. a tire that is 10% underinflated | ² Analysis by Continental based on customer experiences

Challenges



Harsh conditions that challenge the tire increase the likelihood of tire failure.



Vehicles transport **heavy materials** on tough road surfaces.



Lateral forces while cornering and operating speeds lead to **high temperatures** in tires.



In vehicles operation the tire temperature is increasing which leads to increasing **inflation pressure**.



Lack of time for frequent manual tire checks.

Need to focus on core business.

Solutions

- Receive e-mail and SMS alerts or check your tire pressure in the web portal before vehicles leave the depot to help prevent breakdowns in operation.
- Properly inflated tires save you 1 % on fuel compared to a tire just ten percent underinflated. Additionally, it increases casing life by up to 20 %.*
- Monitor tire information of entire fleet in web portal.
- Get all time precise information on the tires' operating condition and thus prevent pre-mature failures and costly vehicle downtimes.
- Ensure correct inflation pressure during increasingly high operating temperature. Get system-supported tire information and save working hours for manual pressure checks.

* Please refer to the tire manufacturer's load and inflation information to determine the tire's weight capacity and proper air pressure.

Intelligent Earthmoving



Tire sensor

Mounted onto the inner liner: **measures pressure and temperature** from inside the tire.



ContiPressureCheck

is the perfect single vehicle solution for monitoring tire pressure and temperature by using one of the following options:

Single

is the easy entry solution using a display in the driver cabin and a Hand-Held Tool for monitoring

Integrated

includes the use of a telematics integration

ContiConnect

is the solution for multiple vehicles and transmits it to the ContiConnect web portal.

Yard

is the solution for vehicles which regularly return to dedicated checkpoints. The Yard Reader Station collects the data of your vehicles wirelessly.

Live

Is the optimal solution for a remote tracking of the tire pressure/temperature. Each vehicle is equipped with a Continental Telematic Unit and tire sensors. Tire data is accessible in real time on the ContiConnect web portal or app.

Sensor mounting is foreseen for 15" and above for pneumatic radial tire in tubeless applications. In case of further question to sensor (like mounting in cross-ply / bias tires) please contact your local Commercial Specialty Tires (CST) Technical Customer Services or send an email to specialtytires@conti.de.

Benefits



Increase efficiency



Keep track of your assets



Maximize uptime



Safety



Sustainability

All Continental radial Earthmoving tires are equipped with an intelligent tire sensor that provides data in real time to ensure optimal tire pressure and temperature



ContiPressureCheck

Single Vehicle Monitoring

ContiPressureCheck is a system for monitoring tire pressure and air temperature via sensor in the tire, for a single vehicle. This system displays the collected data in the driver's cabin and sends a signal when tire pressure is not optimal. ContiPressureCheck is a driver-centric system for single vehicles and can be integrated into third-party telematics solutions by enabling long-distance, wireless data transmission.

ContiConnect

Multiple Vehicle Solution

ContiConnect is a solution that easily connects multiple vehicles and helps fleet managers move from rigid, manual maintenance routines to targeted, on-time maintenance. The tool includes a yard reader/telematic unit that enables remote data collection and transmission. This information is transmitted to the Continental backend and then uploaded to the ContiConnect web portal. This way, drivers and fleet managers can check the data anytime and anywhere on the web. Tire problems are immediately identified. So it's more convenient to get real-time information 24/7!

Components needed by Solution

Single

- Display
- Hand-Held Tool (HHT)
- Central Control Unit (CCU)
- Tire sensors

Integrated

- Hand-Held Tool (HHT)
- Central Control Unit (CCU)
- Tire sensors
- In vehicle telematics integration proprietary

Yard

- ContiConnect Web Portal
- Hand-Held Tool (HHT)
- Yard Reader Station (YRS)
- Tire sensors

Live

- ContiConnect Web Portal
- Hand-Held Tool (HHT)
- Yard Reader Station (YRS)
- Central Control Unit (CCU)
- Central Telematic Unit (CTU)
- Tire sensors

Wheel Loader



1.2	4.2.4	1.2	4.2.4	YR	4.2.4	1.2	CTU
6.2	HHT	7.2	HHT	HHT		4.2.4	6.2

ADT



1.2	4.2.6	1.2	4.2.6	YR	4.2.6	1.2	CTU
6.2	HHT	7.2	HHT	HHT		4.2.6	6.2

RDT



1.2	4.2.6	1.2	4.2.6	YR	4.2.6	1.2	CTU
6.2	HHT	7.2	HHT	HHT		4.2.6	6.2

Underground Dumper



1.2	4.2.6	1.2	4.2.6	YR	4.2.4	1.2	CTU
6.2	HHT	7.2	HHT	HHT		4.2.4	6.2

ContiConnect is technically feasible for underground mining applications. Please contact your sales representative for details.

Compact Construction



For Telehandler & Backhoe Loader on Hard Grounds

CompactMaster EM

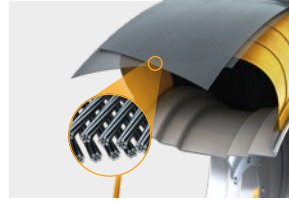
The CompactMaster EM is a compact construction tire developed for telehandlers operating on paved surfaces, asphalt, sand and gravel.

Dimension	TRA	Type
460/70R24 (17.5LR24)	R4	TL
500/70R24 (19.5LR24)	R4	TL

Features and benefits



Turtle Shield Shaped Tread Base Line protects shoulder area against penetration and cuts by foreign objects



High stiffness of tire in lateral direction and protection in center area against foreign objects due to Twisted Steel Belt



Finely structured blocks with high amount of rubber volume for easy turning on the spot

For Telehandler & Backhoe Loader on Paved Grounds

CompactMaster AG

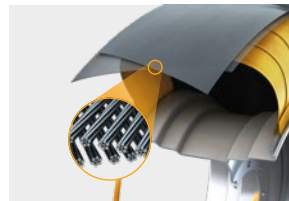
The CompactMaster AG is a compact construction tire developed for telehandlers operating on fields, grassed land and on paved grounds.

Dimension	TRA	Type
460/70R24 (17.5LR24)	R4	TL
500/70R24 (19.5LR24)	R4	TL

Features and benefits



Turtle Shield Shaped Tread Base Line protects shoulder area against penetration and cuts by foreign objects



High stiffness of tire in lateral direction and protection in center area against foreign objects due to Twisted Steel Belt



Wide lugs and wide lug base lead to high traction on muddy grounds and ensure a good self-cleaning behavior

For Telehandler

TeleMaster

The TeleMaster is a solid tire that was developed for the specific demands of telehandler users.

Dimension	Type
315/95-28	Solid
360/85-28	Solid

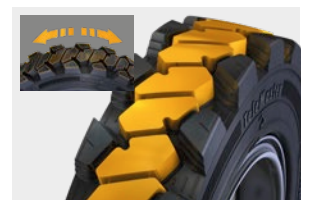
Features and benefits



The advanced solid three layer construction delivers a comfortable ride and offers a long service life



The reinforced sidewalls prevents punctures and cuts



The circumferential rib tread pattern ensures high traction in both directions

Compact Construction



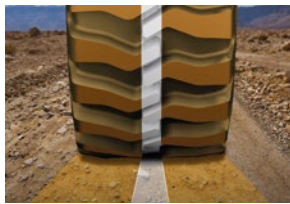
For Compact Loader & Backhoe Loader

70E

The 70E tire is designed for tough off-road and construction-site usage on small construction vehicles.

Dimension	Type
325/70R18 MPT	TL
365/70R18	TL
335/80R20	TL
365/80R20	TL
405/70R20	TL

Features and benefits



Two-fold pattern design leads to high work efficiency and low fuel consumption due to dense block configuration with open outer tread design



High traction capability in forward and backward direction ensures high work efficiency due to symmetric pattern design



Bead protection of sidewall reduces risk of flat tire

For Compact & Backhoe Loader

MPT81

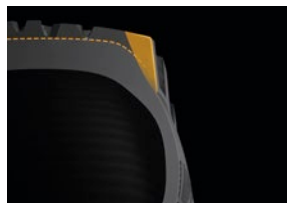
The MPT81 tire is designed for mixed on-/off-road use with a strong emphasis on tough conditions. The MPT81 is suitable on various ground surfaces and especially on snow.

Dimension	Type
315/55R16 MPT	TL
275/80R20 MPT	TL
335/80R20 MPT	TL
365/80R20 MPT	TL

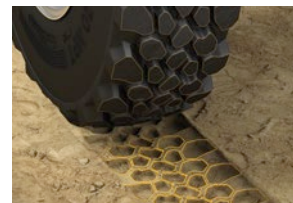
Features and benefits



High performance on any surface due to our multi functional tread design with three variations in tread depths



Turtle Shield protects upper sidewall and shoulder area for high robustness and puncture resistance



Multiple block geometries for excellent self cleaning capabilities and high traction abilities

For Compact & Backhoe Loader

MPT80

The MPT80 is a tire with good off-road attributions and economical benefits.

Dimension	Type
10.5R20 MPT (275/80R20)	TL
12.5R20 MPT (335/80R20)	TL
14.5R20 MPT (365/80R20)	TL



ContiMine
Underground Mining Solutions



Every angle of our tires is special. Even those you can't see.

Originally inspired by racing tire design, the innovative V.ply technology enhances the cross-ply technology with multiple cords arranged in a recognizable V-shaped angle. V.ply technology combines extraordinary robustness and tire stability with great rim seat, force transmission and steering response in demanding vehicle operations. The sharper angle of the carcass layers also means that the tread rubber gets slightly compressed, which is a major advantage in rough applications like underground mines where freshly blasted rocks are a constant danger to tires. The tread cuts that these rocks generate are very hard to avoid but the growth of these cuts can be reduced by the compressed tread rubber. ContiCutCompress cannot eliminate the risk of tire damages but certainly reduces the growth of tread cuts and therefore improves the tire performance.

- 1 Breaker layers**
Up to four V.ply breaker layers not only provide additional rigidity to the tread area, but they also function as an excellent bonding element between the outer rubber tread and inner polymer structure.
- 2 V.ply construction**
Up to 20 layers of high-resistance polymer fiber are aligned in a specially angled V-pattern. This unique technology is inspired by racing tire design and means less inner movement for low rolling resistance.
- 3 Profiled inner bead**
In contrast to beads with a single round wire, the V.ply design is based on up to three bead wire bundles. The result is a wide bead, which provides even load distribution and perfect rim fit.
- 4 Strengthened sidewalls**
The V.ply technology allows for the design of exceptionally strong sidewalls. They provide low deflection for high damping, excellent driving stability, and nearly unmatched protection against damage.





A large yellow mining loader wheel with a Continental ScoopMaster tire is shown in a dark, wet underground mine tunnel. The tire is heavily splattered with mud and water, and the word "Continental" and "ScoopMaster" are visible on the sidewall. The background shows the rough, rocky walls of the tunnel and some distant lights.

ContiMine ScoopMaster

Loaders or Scoops transport heavy loads of orebodies at low speeds over a relatively short distance to dump trucks or conveyor belts. They often face freshly blasted, sharp rocks in wet and abrasive conditions. Durability, traction, and even wear are the most important tire features.

Continental's ScoopMaster was developed to last in this extremely harsh underground mining environment. Premium quality tread and sidewall rubber compounds provide maximum resistance to rock cutting, penetrations, and tearing. The special V-ply construction in combination with the carcass rubber compound provides high carcass strength, excellent flex fatigue, and sidewall damage resistance.

ScoopMaster

Dimension	TRA	Type	PR
12.00-24	L5S	TT	20
17.5-25	L5S	TL	20
18.00-25	L5S	TL	28



Features and benefits



Maximum casing protection against punctures and impacts

Wide contact area for reduced slippage, good traction, and even wear

High wear volume for optimum mileage performance



Additional cut-resistant rubber rib to protect casing in sidewall area where sharp rocks can damage the tire

Cut-resistant rubber compound for sidewall protection



Tread wear indicator (TWI) designed for easy and fast tread depth measurement

TWI shape prevents stone catching and carcass penetration



ContiMine DrillMaster

Specialized machines like Drill Rigs, Scalers, or Bolters are required for blast hole drilling in order to prepare for detonation, removal of loose rock after blasting, or the installation of rock bolts to support the roof. To drill blast holes as economically as possible, Drill Rigs cover rock cross sections of a hundred square meters and more. Therefore, the Drills use up to four booms, which result in very high tire loads when moving. High cutting resistance, good traction, and stability are essential for tires used in these applications.

The Continental DrillMaster with its V-ply construction is the perfect choice: a highly cut-resistant rubber compound protects the carcass during operation in freshly blasted rocks. The tire carcass is designed to stand heavy loads. The innovative zigzag tire tread design offers the maximum amount of gripping edges in all directions to manage steep inclination and declination with tight cornering safely.



DrillMaster

Dimension	TRA	Type	PR
12.00-24	L4	TL	28
14.00-24	L4	TT	30

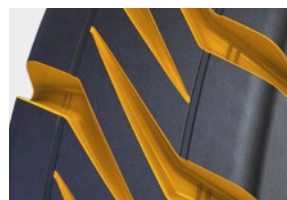


Features and benefits



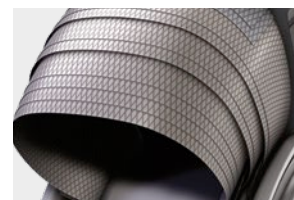
Zigzag design with multiple edges for maximum traction in circumferential and lateral direction

Connected tread block for increased stability especially during tight downhill cornering



Round shaped tread groove to reduce stone trapping

Extensive siping ratio of tread for high amount of gripping edges



High load capability due to V-ply carcass construction

Low heat build-up when driving long distances

Technical Data

ContiEarth

RDT-Master

Radial Tire

Tire size	TRA code	Type	Transport		Loader		Rim	Overall diam. mm (inch)	Overall width mm (inch)	Tread depth mm (32")	Article no.	
			SR/PR	LI/SS	SR/PR	LI/SS						
33 inch												
18.00R33	E4	TL	2*	191/B	-	-	33x13.00/2.5	1873 (73.)	518 (20.4)	54 (68/32nd)	1270554	available
18.00R33 CR	E4	TL	2*	191/B	-	-	33x13.00/2.5	1873 (73.)	518 (20.4)	54 (68/32nd)	1270557	available
21.00R33	E4	TL	2*	200/B	-	-	15.00 x 33/3.0	2000 (78.7)	603 (23.7)	58 (73/32nd)	1270555	in preparation
21.00R33 CR	E4	TL	2*	200/B	-	-	15.00 x 33/3.0	2000 (78.7)	603 (23.7)	58 (73/32nd)	1270558	in preparation
35 inch												
24.00R35	E4	TL	2*	209/B	-	-	17.00 x 35/3.5	2180 (85.8)	670 (26.4)	70 (88/32nd)	1270556	in preparation
24.00R35 CR	E4	TL	2*	209/B	-	-	17.00 x 35/3.5	2180 (85.8)	670 (26.4)	70 (88/32nd)	1270559	in preparation

EM-Master E3/L3

Radial Tire

Tire size	TRA code	Type	Transport		Loader		Rim	Overall diam. mm (inch)	Overall width mm (inch)	Tread depth mm (32")	Article no.	
			SR/PR	LI/SS	SR/PR	LI/SS						
25 inch												
17.5R25	E3/L3	TL	2*	167/B	2*	182/A2	25 - 14.00/1.5	1344 (52.9)	461 (18.1)	30 (38/32nd)	1270565	in preparation
20.5R25	E3/L3	TL	2*	177/B	1*	186/A2	25 - 17.00/2.0	1477 (58.1)	530 (20.9)	37 (47/32nd)	1270517	available
23.5R25	E3/L3	TL	2*	185/B	1*	195/A2	25 - 19.50/2.5	1594 (62.8)	617 (24.3)	39 (49/32nd)	1270516	available
26.5R25	E3/L3	TL	2*	193/B	2*	209/A2	25 - 22.00/3.0	1736 (68.3)	691 (27.2)	41 (52/32nd)	1270515	available
29.5R25	E3/L3	TL	2*	200/B	2*	216/A2	25 - 25.00/3.5	1843 (72.6)	759 (29.9)	46 (58/32nd)	1270514	available
750/65R25	E3/L3	TL	2*	190/B	1*	202/A2	25 - 24.00/3.5	1615 (63.6)	755 (29.7)	43 (53/32nd)	1270547	available
29 inch												
775/65R29	E3/L3	TL	2*	195/B	1*	206/A2		1744 (68.7)	775 (30.5)		1270572	in preparation
875/65R29	E3/L3	TL	2*	203/B	1*	214/A2		1874 (73.8)	875 (34.4)		1270548	in preparation

EM-Master E4/L4

Radial Tire

Tire size	TRA code	Type	Transport		Loader		Rim	Overall diam. mm (inch)	Overall width mm (inch)	Tread depth mm (32")	Article no.	
			SR/PR	LI/SS	SR/PR	LI/SS						
25 inch												
23.5R25	E4/L4	TL	2*	185/B	1*	195/A2	25 - 19.50/2.5	1609 (63.3)	603 (23.7)	49 (62/32nd)	1270562	available
26.5R25	E4/L4	TL	2*	193/B	2*	209/A2	25 - 22.00/3.0	1739 (68.5)	697 (27.4)	52 (66/32nd)	1270563	available
29.5R25	E4/L4	TL	2*	200/B	2*	216/A2	25 - 25.00/3.5	1852 (72.9)	780 (30.7)	59 (74/32nd)	1270564	available

LD-Master Traction

Radial Tire

Tire size	TRA code	Type	Transport		Loader		Rim	Overall diam. mm (inch)	Overall width mm (inch)	Tread depth mm (32")	Article no.	
			SR/PR	LI/SS	SR/PR	LI/SS						
25 inch												
35/65R33	L5	TL			3*	229/A2	28.00x33/3.5	2065 (81.3)	892 (35)	97 (122/32nd)	1270560	available

All radial tires (RDT-Master, EM-Master, LD-Master and DumperMaster) are delivered with sensors ex factory.

Technical Data

ContiMine

DumperMaster

Radial Tire

Tire size	TRA code	Type	Transport		Loader		Rim	Overall diam. mm (inch)	Overall width mm (inch)	Tread depth mm (32")	Article no.	
			SR/PR	LI/SS	SR/PR	LI/SS						
25 inch												
26.5R25	E4/L4	TL	4*	210/A8	3*	214/A2	25 - 22.00/3.0	1769 (69.6)	690 (27.2)	57 (72/32nd)	1270519	available
29.5R25	E4/L4	TL	4*	217/A8	3*	221/A2	25 - 25.00/3.5	1870 (73.6)	774 (30.5)	59 (74/32nd)	1270520	available
33 inch												
35/65R33 (875/65 R33)	E4/L4	TL	4*	225/A8	3*	229/A2	28.00x33/3.5	2056 (80.9)	877 (34.5)	60 (76/32nd)	1270521	available
35/65R33 (875/65 R33) LC	E4/L4	TL	4*	225/A8	3*	229/A2	28.00x33/3.5	2056 (80.9)	877 (34.5)	60 (76/32nd)	1270598	available

LC = Long Cycle. Specialized for ADT operations haulage of up to 14 km distance per hour.

ScoopMaster



Tire size	TRA code	Type	Transport		Loader		Rim	Overall diam. mm (inch)	Overall width mm (inch)	Tread depth mm (32")	Article no.	
			SR/PR	LI/SS	SR/PR	LI/SS						
24 inch												
12.00-24	L5S	TT	-	-	20	175/A2	8.50V-24/1.3	1269 (50)	321 (12.6)	57 (72/32nd)	1230079	in preparation
25 inch												
17.5-25	L5S	TL	-	-	20	181/A2	14.00-25/1.5	1362 (53.6)	446 (17.6)	69 (87/32nd)	1270566	in preparation
18.00-25	L5S	TL	-	-	28	199/A2	13.00-25/2.5	1632 (64.3)	509 (20)	88 (111/32nd)	1270567	in preparation

DrillMaster



Tire size	TRA code	Type	Transport		Loader		Rim	Overall diam. mm (inch)	Overall width mm (inch)	Tread depth mm (32")	Article no.	
			SR/PR	LI/SS	SR/PR	LI/SS						
24 inch												
12.00-24	L4	TL	-	-	28	187/A2	8.50-24/1.3	1242 (48.9)	315 (12.4)	28 (35/32nd)	1230076	available
14.00-24	L4	TT	-	-	30	195/A2	10.00-24/1.5	1352 (53.2)	386 (15.2)	31 (39/32nd)	1230077	available

SR: Star Rating for Radial Tires
 PR: Ply Rating for x-ply tires
 LI: Load Index
 SS: Speed Symbol

Specifications are subject to change without notice
 For further technical information, see data sheets
 * For details regarding product availability, please
 contact your local sales representative.

Technical Data

Compact Construction

70E

Radial Tire

Tire size	TRA code	Type	Transport		Loader		Homologation	Rim	Overall diam. mm (inch)	Overall width mm (inch)	Tread depth mm (32")	Article no.
			SR/PR	LI/SS	SR/PR	LI/SS						
18 inch												
325/70R18 MPT		TL	125/E		138/A2		-	9x18	933 (36.7)	328 (12.9)	22.5 (28/32nd)	4740440 available
365/70R18		TL	135/B		146/A2		UNECE R-106*	11x18	969 (38.1)	365 (14.4)	22.5 (28/32nd)	5740160 available
20 inch												
335/80R20		TL	136/B		147/A2		UNECE R-106*	11x20	1040 (41)	335 (16.2)	22.5 (28/32nd)	5740170 available
365/80R20		TL	141/B		153/A2		UNECE R-106*	11x20	1098 (43.2)	365 (14.4)	25 (31/32nd)	5740180 available
405/70R20		TL	143/B		155/A2		UNECE R-106*	13x20	1064 (41.9)	405 (15.9)	25 (31/32nd)	5740190 available

MPT80

Radial Tire

Tire size	TRA code	Type	SR/PR	LI/SS	Rim	Overall diam. mm (inch)	Overall width mm (inch)	Tread depth mm (32")	Article no.
20 inch									
10.5R20 MPT (275/80R20)		TL	10	128/J	9x20	950 (37.4)	267 (10.5)	16.5 (21/32nd)	0574007 available
10.5R20 MPT (275/80R20)		TL	12	132/J	11x20	950 (37.4)	267 (10.5)	16.5 (21/32nd)	0574155 available
10.5R20 MPT (275/80R20)		TL	14	134/J	9x20	950 (37.4)	267 (10.5)	16.5 (21/32nd)	0574006 available
12.5R20 MPT (335/80R20)		TL	16	139/J	11x20	1030 (40.6)	318 (12.5)	16.5 (21/32nd)	0574156 available
12.5R20 MPT (335/80R20)		TL	22	147/J	11x20	1030 (40.6)	318 (12.5)	16.5 (21/32nd)	0574162 available
14.5R20 MPT (365/80R20)		TL	10	132/J	11x20	1090 (42.9)	368 (14.5)	17.5 (22/32nd)	0574185 available
14.5R20 MPT (365/80R20)		TL	18	143/J	11x20	1090 (42.9)	368 (14.5)	17.5 (22/32nd)	0574186 available
14.5R20 MPT (365/80R20)		TL	22	152/J	11x20	1090 (42.9)	368 (14.5)	17.5 (22/32nd)	0574188 available

MPT81

Radial Tire

Tire size	TRA code	Type	SR/PR	LI/SS	Rim	Overall diam. mm (inch)	Overall width mm (inch)	Tread depth mm (32")	Article no.
16 inch									
315/55R16 MPT		TL	120/K	124/F	11x16	753 (29.6)	315 (12.5)	16.5 (21/32nd)	0574012 available
20inch									
275/80R20 MPT		TL	134/K		9x20	948 (37.3)	275 (10.8)	16.5 (21/32nd)	0574013 available
335/80R20 MPT		TL	147/K		11x20	1044 (41.1)	335 (13.2)	16.5 (21/32nd)	0574014 available
365/80R20 MPT		TL	152/K		11x20	1092 (43)	365 (14.4)	19.5 (25/32nd)	0574015 available

Technical Data

Compact Construction

CompactMaster EM

Radial Tire

Tire size	TRA code	Type	Transport			Overall diam. mm (inch)	Overall width mm (inch)	Tread depth mm	Article no.	
			SR/PR	LI/SS	Rim					
24 inch										
460/70R24 (17.5LR24)	R4	TL	159/A8	159/B	DW15L, TW15L	1245 (49)	445 (17.5)	33 (42/32nd)	0670003	available
500/70R24 (19.5LR24)	R4	TL	164/A8	164/B		1310 (51.6)	500 (19.5)	33 (42/32nd)	0670005	in preparation

CompactMaster AG

Radial Tire

Tire size	TRA code	Type	Transport			Overall diam. mm (inch)	Overall width mm (inch)	Tread depth mm	Article no.	
			SR/PR	LI/SS	Rim					
24 inch										
460/70R24 (17.5LR24)	R4	TL	159/A8	159/B	DW15L, TW15L	1244 (49)	445 (17.5)	36 (45/32nd)	0670003	available
500/70R24 (19.5LR24)	R4	TL	164/A8	164/B		1310 (51.6)	500 (19.5)	36 (45/32nd)	0670004	in preparation

TeleMaster

Solid Tire

Tire size	Type	LI/SS	Rim	Overall diam. mm (inch)	Overall width mm (inch)	Tread depth mm	Article no.	
315/95-28	Solid	175/A6	8.50-28	1283 (50.5)	302	60 (76/32)	1376465	available
360/85-28	Solid	183/A6	10.00-28	1330 (52.4)	340	65 (82/32)	1376464	available

Intelligent Earthmoving

Components



Display in the driver's cabin

- Display shows the status of the tire and indicates 7 different types of warnings and the related tire position in the driver's cabin



ContiConnect Web Portal

- Browser-based web interface for access to data, statistics and reports.



Receiver/Central Control Unit (CCU)

- Receives and evaluates signals from tire sensors
- Generates warnings and provides them for display - Up to 24 tires fitted on up to 6 axle



Hand-Held Tool (HHT)

- Initial configuration of entire system
- Wireless communication with tire sensors
- Synchronizes tire sensors to each wheel position
- Wired communication with CCU



Additional Receiver

- Integrated antenna and receiver to be used if:
 - Vehicle has an axle spread of more than 6m
 - Vehicle has more than 3 axles
 - A trailer is docked



Yard Reader Station (YRS)

- The connectivity component that receives data wirelessly from the tire sensor upon returning to the yard.



Telematic Control Unit (TCU)*

- The Telematic Control Unit receives the processed data from the CCU and transmits it along with a GPS signal to ContiConnect webportal while the vehicle is moving in operation.



Tire Sensor

- Integrated battery-powered tire sensor with radio frequency transmitter - individual coding per running wheel
- Sends data every 2 minutes
- Bluetooth functionality



Cleaning Scraper & Mounting Tool (for retrofitment of sensor)

- Scraper for pretreating the inner layer of the tire
- Pressing tool including insert
- Tool for pressing on the tire sensor during bonding



OTR Patch

- Ensures the proper fit of the sensor in OTR tires (Protects sensor bonding with the tire)

	Description	Article No.	
● Basic Kits	Kit 1.2: without additional receiver	17 34 115	
	Kit 2.2: with additional receiver	17 34 116	
	Kit 3.2: Trailer	17 34 117	
	Kit 5.2: Coach	17 34 120	
● Sensor Kits	Kit 4.2.2: 2 tire sensors	17 34 124	
	Kit 4.2.4: 4 tire sensors	17 34 118	
	Kit 4.2.6: 6 tire sensors	17 34 119	
● Advanced Kits	Kit 6.2: TireView (Display)	17 34 121	
	Kit 7.2: TireConnect (Telematics cable)	17 34 122	
	Kit 8.2: TisWeb® Starter Kit Tire	17 34 125	
Tire Sensor mounting & spare parts	Cleaning Scraper	17 34 130	
	Mounting tool (tire sensor)	17 34 019	
	Insert - Mounting Tool	17 34 022	
	Set Tire Sensor Container 12	17 34 072	
	Set Tire Sensor Container 24	17 34 073	
	Set 1 OTR fixation patch	17 34 238	
	Set 6 OTR fixation patch	17 34 239	
	Set 10 OTR fixation patch	17 34 240	
	Spatula	17 34 021	
	Glue CB2250 1,6g	17 34 113	
	Glue CB2250 4,8g	17 34 112	
	Glue CB2250 9,6g	17 34 020	
	Set Sticker and Valve cap 2	17 34 123	
	Set Sticker and Valve cap 4	17 34 114	
	Set Sticker and Valve cap 6	17 34 088	
System configuration & spare parts (Hand-Held Tool)	Set Hand-Held Tool incl. accessory	17 34 052	
Spare parts - System	Set Central Control Unit Truck/Bus	17 34 060	
	Bracket (Central Control Unit)	17 34 003	
	Set Central Control Unit Trailer	17 34 061	
	Additional receiver + Impact protection	17 34 056	
	Impact protection (add. receiver)	17 34 055	
	Bracket (additional receiver)	17 34 002	
	Sub-harness A	17 34 008	
	Sub-harness B	17 34 007	
	Sub-harness C	17 34 006	
	Sub-harness D	17 34 009	
	Sub-harness D - large (13 metres)	17 34 067	
	Sub-harness E	17 34 087	
	Harness F+G	17 34 016	
	Sub-harness H	17 34 017	
	Sub-harness K	17 34 070	
	Sub-harness L	17 34 069	
	Display	17 34 011	
	Display holder	17 34 012	
	Display holder dashboard	17 34 071	
	Pressure Check Indicator	17 34 013	
	Fuse Kit F	17 34 036	
	Connector Kit A+B+C	17 34 018	
	Partner Case	Partner Case	17 34 134
		KIT CPC Partner Case	17 34 135
		Kit CPC Training Box	17 34 131
	ContiConnect	KIT YardReader Station	*
		CTU (Central Telematics Unit)	*

*Please get in contact with our sales team for detailed information

Continental Reifen Deutschland GmbH

Commercial Specialty Tires

Büttnerstraße 25, 30165 Hannover, Germany

Phone: +49 511 938 - 01

www.continental-specialty-tires.com